

# Zirconia with the Aesthetic Difference

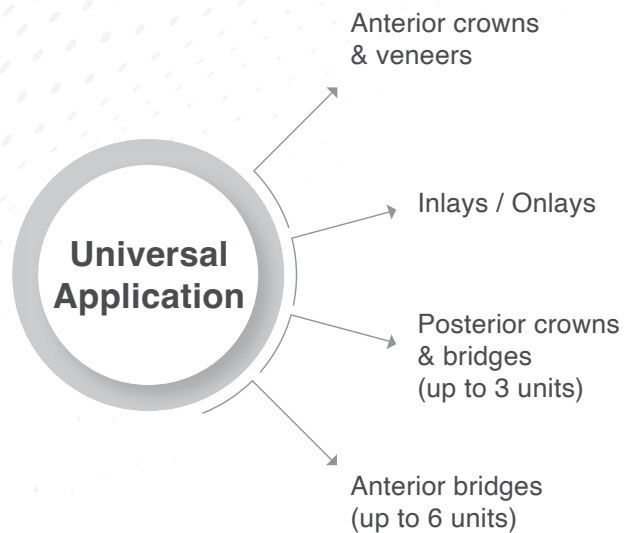


## Synchronizing Aesthetics & Function

**SHOFU ZR Lucent** is an innovative, multi-layered highly translucent, pre-shaded, gradient, zirconia disk with remarkably life-like aesthetics and exceptional durability for predictable anterior and posterior restorations.

**SHOFU ZR Lucent** has an outstanding flexural strength of 1000 MPa for greater strength and durability.

A unique balance of shades and translucency in a single millable blank ensures seamless aesthetic integration and efficient production.

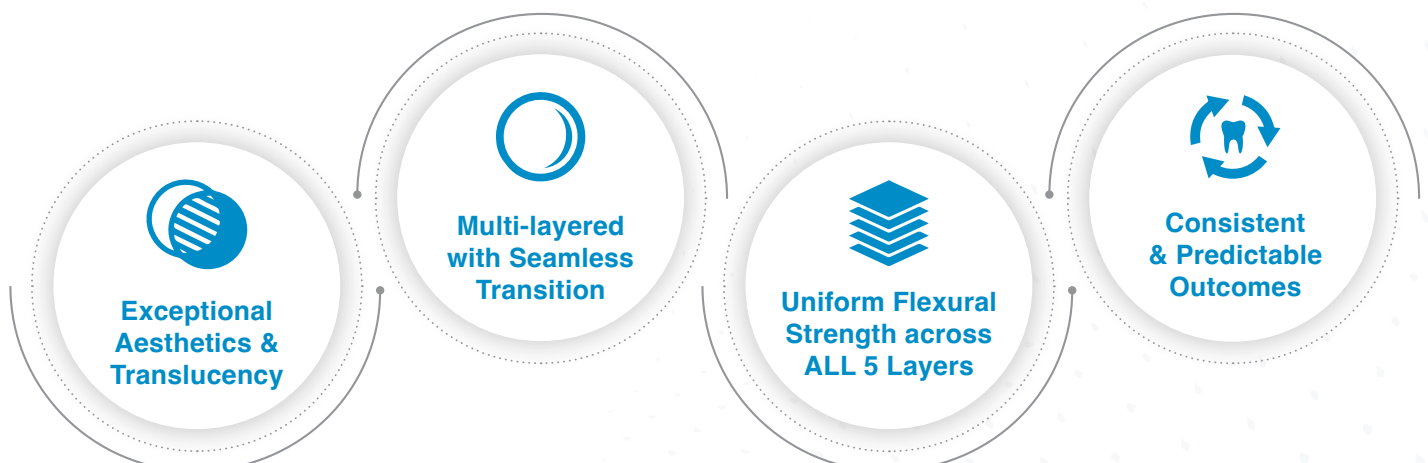


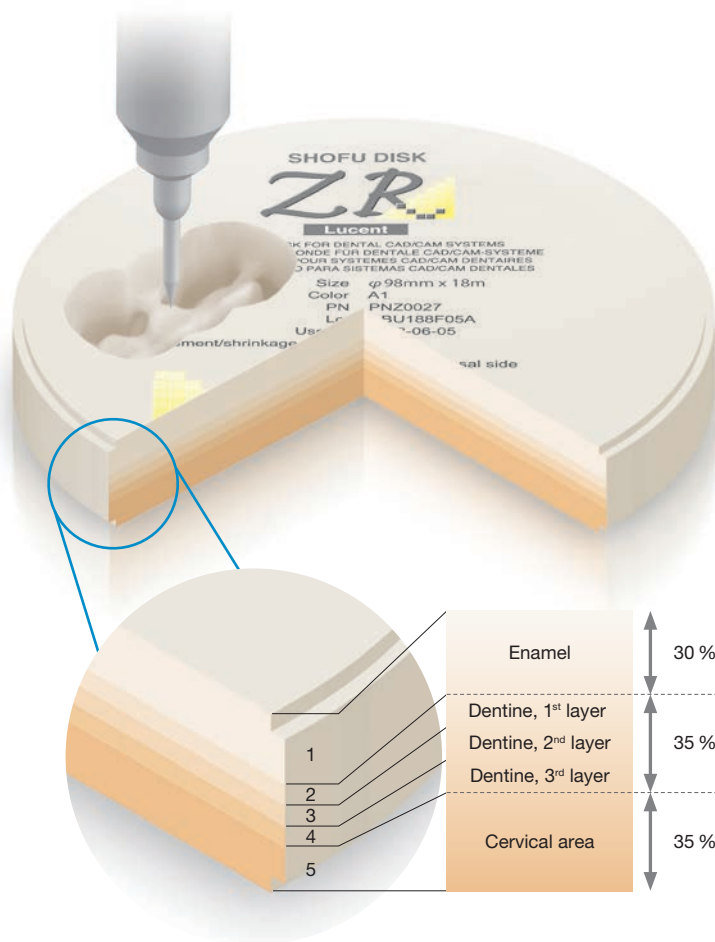
*c/o Mr. Edagawa, JAPAN*



*c/o Mr. Nick Mekias, GREECE*

## QUALITY YOU CAN COUNT ON





## 5 Layers with Seamless Transition to Natural Shades

No more aesthetic compromises in Zirconia Restorations!

**SHOFU ZR Lucent** has 5 layers with seamless gradation to mimic the transition of chroma seen in a natural tooth.

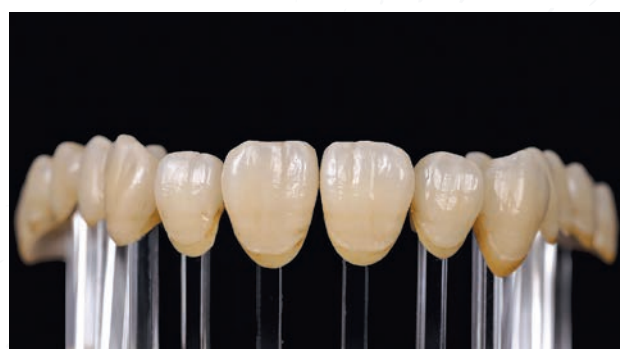
These highly translucent disks exhibit a smooth transition of shades within the five-layer blanks to ensure a harmonious, life-like blend from enamel (one layer, 30%) to dentine (three layers, 35%) and the cervical area (one layer, 35%).

Depending on the vertical position of the restoration planned, you can reproduce several intensities of one shade group using only one blank.

## Superior Aesthetics & Brilliance

**SHOFU ZR Lucent** exhibits transmission of visual light similar to lithium disilicate (Vintage LD Press - medium opacity) with better masking ability for cases with discoloration.

Restorations can be further enhanced by staining and glazing with Vintage Art Universal Stains or micro-layering with Vintage ZR Porcelain.



c/o Mr. Edagawa, JAPAN

## Strong & Durable

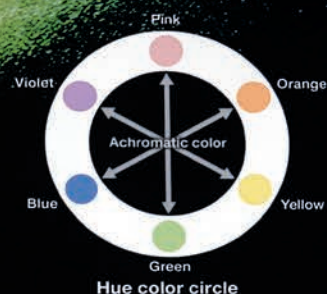
**SHOFU ZR Lucent** is produced with pure, high-quality Tosoh Zirconia powder through a special manufacturing process.

The highly aesthetic monolithic zirconia exhibits superior mechanical properties with high flexural strength, uniform throughout the thickness of the disk, despite the gradation of shades.

Type of porcelains	Flexural strength
Layering porcelain	80 – 100 MPa
Press ceramics	120 – 150 MPa
Lithium-disilicate	350 – 450 MPa
Conventional white Zirconia	1.200 – 1.400 MPa
Super High Translucent Zirconia	500 – 800 MPa
Super High Translucent Zirconia SHOFU ZR-Lucent (5Y-PSZ)	> 1.000 MPa (DIN EN ISO 6872:2015)

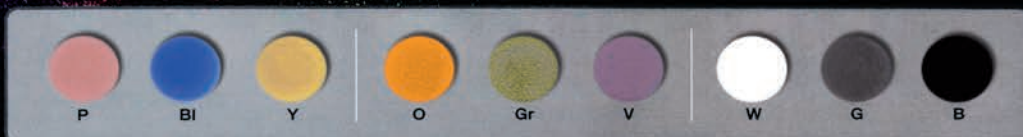


## Vibrant Colour Spectrum



### Base Stain

Basic shade adjustment and characterization are performed with these colors.



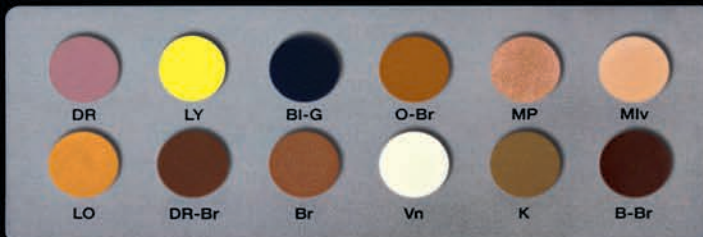
### Shade Stain

Shade intensity can be controlled with these materials.

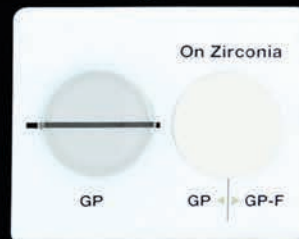


### Color Stain

Due to extensive color lineup, desired shade can be obtained easily without complicated mixing.



### Glazing Powder



SHOFU INC.

## Instant & Predictable Staining

**All Purpose True-Colour Stain System** for Quick & Error-free 3D Staining of Zirconia Restorations.

Mix the fluorescent Vintage Art Universal Glazing Powder GP-F with Yamamoto liquid to visualize the end result in real time, even before firing.

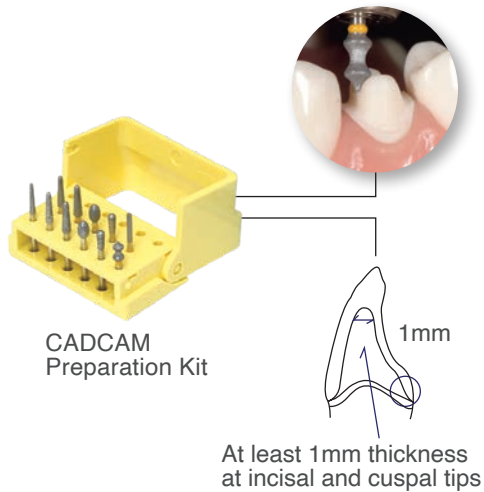


*Life-like 3D staining of fully contoured, ZR Lucent (five-layered) zirconia restoration.*



## Smart Solutions with SHOFU ZR Lucent

### 01 Prepare



### 02 Restore



### 03 Finish



## Technical Data

Diameter	98.5 mm with groove
Thickness	14 mm, 18 mm, 22 mm
Shades	Monolayer: Trans Multilayer: A1, A2, A3, A3.5, B1, C1, D2
Flexural strength, sintered (MPa)	1,019 MPa (DIN ISO 6872:2015)
Coefficient of thermal expansion	10.2 x10 <sup>-6</sup> K <sup>-1</sup> (25°C-500°C)
Vickers hardness, unsintered (HV 02)	45 HV (DIN ISO 6507:2005)
Sintering temperature	1,450°C
Translucency (thickness 1 mm)	Monolayer Translucent 37% Multilayer Incisal 34% Multilayer Cervical 31%



## Order Information

Disk	↓ 14 mm	↓ 18 mm	↓ 22 mm
Trans (Monolayer)	Z0022	Z0026	Z0030
A1 (Multilayer)	Z0023	Z0027	Z0031
A2 (Multilayer)	Z0024	Z0028	Z0032
A3 (Multilayer)	Z0025	Z0029	Z0033
A3.5 (Multilayer)	Z0108	Z0120	Z0124
B1 (Multilayer)	Z0109	Z0121	Z0125
C1 (Multilayer)	Z0110	Z0122	Z0126
D2 (Multilayer)	Z0111	Z0123	Z0127

## Related Products



### Vintage Art Universal Stains Basic Color Set [REF P0723]

16 powder stains, 2g each:  
 Pink, Violet, Yellow, Green, Blue,  
 Blue Gray, Orange, Orange Brown,  
 Dark Red Brown, White, Black, Khaki, A shade, B shade,  
 C shade, D shade, Glazing Powder GP-F (15g),  
 Vintage Art Universal Liquid (50ml)  
 Color table, Advanced product information



### ZiLMaster Finishing & Polishing Kit [REF S0009]

Dura-Green DIA  
 TC4 / KN7 / WH6

ZiLMaster Course  
 Bullet / KN7 / WH6

ZiLMaster Medium  
 Bullet / KN7 / WH6

ZiLMaster Fine  
 Bullet / KN7 / WH6

ZiLMaster Refills 3 pcs / box  
 HP and CA Shank



### Resicem Basic Set [REF 3220]



### SHOFU Universal Primer [REF Y0060]



**SHOFU DENTAL ASIA-PACIFIC PTE. LTD.**  
 1 Science Park Road, #01-01 / 02 The Capricorn, Singapore Science Park II,  
 Singapore 117528 Tel: (65) 6377 2722  
 eMail: mailbx@shofu.com.sg www.shofu.com.sg



ZRL20230930