

# BEAUTIFIL Flow

A Fluoride Releasing Aesthetic Dental Restorative Material  
with PRG Technology



PRG  
Technology  
**Giomer**

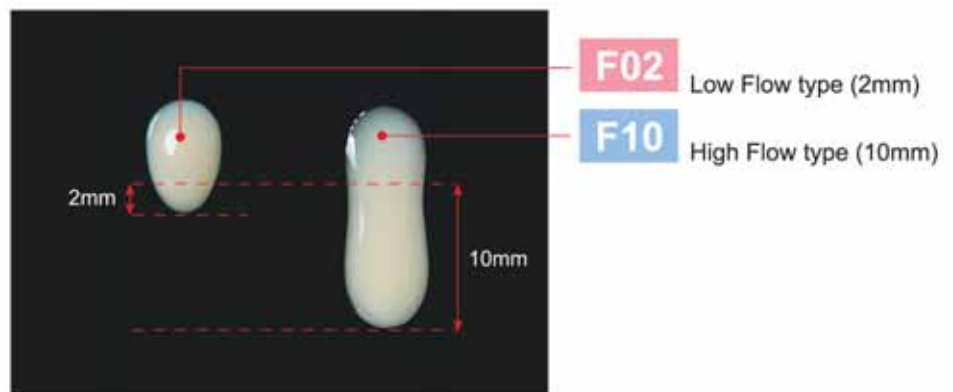


# BEAUTIFIL Flow

Introducing **BEAUTIFIL Flow** a new member to the Giomer family of restoratives, which is created to compliment **BEAUTIFIL** to further enhance its applications. In combination with the **FL-Bond** adhesive system, it gives patients a safe, all-rounded, fluoride-rich restorative system with superior aesthetics and surface lustre.

## Two Distinct Viscosities Reflected as **F02** & **F10**

After several years of research into S-PRG Technology (Surface Pre-Reacted) **BEAUTIFIL Flow** was developed to give you two distinct viscosities **F02** (Low Flow) and **F10** (High Flow) while maintaining the same aesthetics, physical properties, particle size and filler load.



An equal quantity of the two types of **BEAUTIFIL Flow** was placed on a glass plate. The glass plate was then placed vertically to measure the movement of the material (mm) after 1 minute.



**BEAUTIFIL Flow F02**  
Low Flow type

**BEAUTIFIL Flow F02** is created to retain the shape and have moderate flow, especially for restoring cervical areas.



**BEAUTIFIL Flow F10**  
High Flow type

**BEAUTIFIL Flow F10** is created for use where smooth flow is required, especially for restoring gingival box of class II, Pit & Fissure Sealant and as a cavity liner.

**Created for...**

- Restoration of...
  - A variety of minimal lesions such as Class I~ III and V cavities (Minimal Intervention)
  - Gingival box of Class II
  - Root caries and Enamel defects
  - Deciduous dentition
- Pit and Fissure Sealant
- Base and Liner under direct restorations
- Shade adjustment and modification of direct restorations
- Blocking undercuts
- Repair of Composite or Ceramic veneers
- Splinting of mobile teeth
- Adhesive cementation of Laminate Veneers

**Restoration of cervical area**



Before Restoration



Application of BEAUTIFIL Flow F02



After Restoration

**Restoration of Class II cavity using "Laminate sandwich technique"**



Before Restoration



Application of BEAUTIFIL Flow F10



After Restoring with BEAUTIFIL

**Excellent Aesthetics with high polishability**

BEAUTIFIL Flow has been created to harmonize light transmission (as appears in enamel) and light diffusion (as appears in dentin) within the material to achieve an ideal shade match to suit any clinical case without the influence of background colour.

Since BEAUTIFIL Flow exhibits the same colour and translucency as BEAUTIFIL, it can be used not only as a base material but also for colour enhancement and repair on the surface of composite resin restorations making it ideal for use in aesthetically demanding clinical situations.

BEAUTIFIL Flow		BEAUTIFIL
F02	F10	
A3	A3	A3

**Shades**

BEAUTIFIL Flow is available in 7 shades each and 5 shades correspond to \*Vita Lumin and Vintage Halo Porcelain)

**F02** [Low Flow Type] – A1, A2, A3, A3.5, A4, A3O (A3 Opaque) & G (Gum)

**F10** [High Flow Type] – A1, A2, A3, A3.5, A4, A3O (A3 Opaque) & A3T (A3 Translucent)

**G (Gum)** — This shade is used for the cervical area where gingival recession is present.

**A3T(Translucent)** — This shade is recommended to restore rough surfaces on enamel.

BEAUTIFIL Flow	
F02	F10
G	A3T

\*Vita Lumin is a registered trademark of Vita Zahnfabrik, Sackingen, Germany. Vintage Halo is a registered trademark of Shofu Inc., Kyoto, Japan.

## Fluoride Release & Recharge

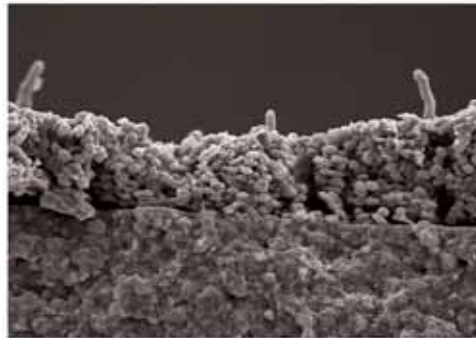
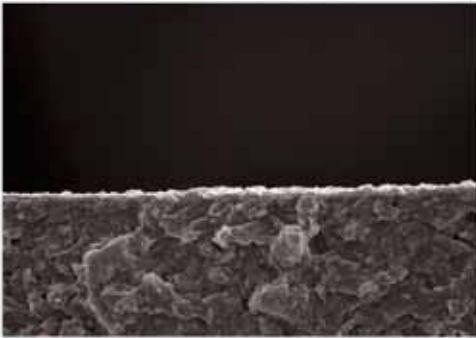
### Similar mechanism as Glass-Ionomer

As a feature of S-PRG filler that has a stable phase of glass-ionomer, **BEAUTIFIL Flow** has fluoride release and recharge that reversibly responds to the concentration of fluoride in the mouth similar to traditional glass-ionomers without causing any material inferiority.

This property can be further enhanced when used with the Shofu "FL-BOND" a 2-step self-etching, fluoride releasing bonding system.

## Anti-Plaque Effect

On the surface of the tooth restored using **BEAUTIFIL** or **BEAUTIFIL Flow**, a material film is formed by saliva. It is reported that plaque is hard to adhere on this material film layer, which therefore inhibits the bacterial adhesion and prevents growth of it on the surface of restoration. Although this material film may be removed by brushing, it will subsequently be formed once again by saliva hence it is reported that S-PRG filler has a function of inhibiting plaque accumulation.



*Provided by Prof. Koji Yamamoto of the ASAHI University At the Autumn Meeting in 2004 (the 121st) of the Japanese Society of Conservative Dentistry.*

## Remarkable Radiopacity

A prerequisite of all restorative materials is to have adequate radiopacity to assist the clinician to diagnose and evaluate restoration integrity. **BEAUTIFIL Flow** has an ideal Radiopacity that can be easily seen in radiographs.

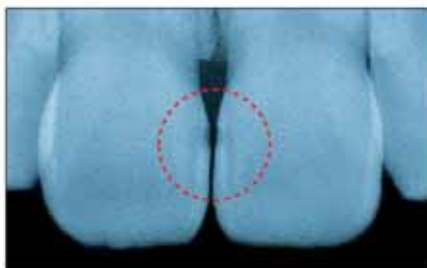
### [ Small proximal cavity ]



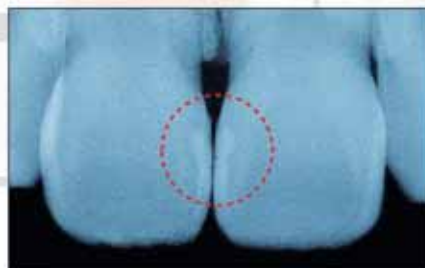
▶▶▶ Before Restoration...



▶▶▶ After Restoration...  
with **BEAUTIFIL Flow**



▶▶▶ Before Restoration...



▶▶▶ After Restoration...  
with **BEAUTIFIL Flow**

BEAUTIFIL Flow

BEAUTIFIL

F10

A3

A3

## Unique Syringe Design

### Dispense on demand with no oozing of excess paste

The **BEAUTIFIL Flow** Syringe has been designed with a special structure at the tip of the plunger to retrieve the excess material when pressure inside the syringe is released during dispensing. As a result it is not necessary to pull back the syringe plunger to prevent oozing of excess paste from nozzle.



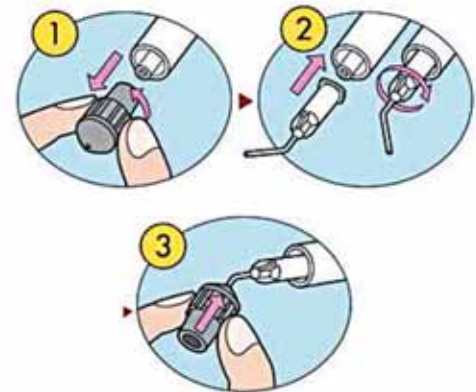
### 360° Rotary Finger Grip

The syringe of **BEAUTIFIL Flow** has 360° rotary finger grip to assist the clinician in multi directional application of the material in a more efficient and time saving manner. The colour coded finger grips in "Pink (F02) low flow type" and "Blue (F10): high flow type" helps to easily identify the different viscosities.



### Multi-purpose Rubber Shield Cap

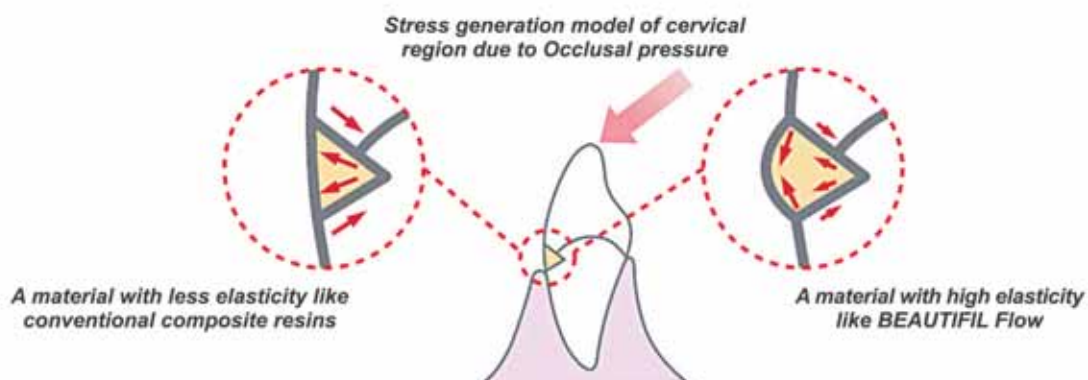
The multi-purpose rubber shield cap is newly developed to cap the syringe and the needle tip when restoring multiple cavities in a single patient. The large flange part further enhances handling.



## High Elasticity and Stable Stress Relaxation

It is believed that Flowable composites "bend with the tooth" due to the elastic property and increase retention in Class V cases. Cured **BEAUTIFIL Flow** is designed to have high elasticity with a low modulus to compensate for the induced strain caused by compression due to the occlusal force.

This characteristic of **BEAUTIFIL Flow** contributes to the durability of bonding in the cervical area. In addition **BEAUTIFIL Flow** has been created to have the same degree of elasticity in **F02** (Low Flow) and **F10** (High Flow) with a stable stress relaxation property.



Order Information



**BEAUTIFIL Flow F02**

Low Flow (2g)  
with 5pcs Needle Tips

**Shades**  
A1, A2, A3, A3.5,  
A4, A30, G



**BEAUTIFIL Flow F10**

High Flow (2g)  
with 5pcs Needle Tips

**Shades**  
A1, A2, A3, A3.5,  
A4, A30, A3T



**BEAUTIFIL OPAQUER (2g)**  
with 5pcs Needle Tips

**Shades**  
UO [ Universal ]  
LO [ Light ]



**BEAUTIFIL Flow Needle Tips**  
(50 pieces)

Related Products



BeautiBond Set



Beautifil II Cosmetic Kit



Beautifil II 6 Color Set



FL-Bond II Complete Set



**SuperSnap Rainbow Kit [PN 0500]**  
For contouring, fine finishing, polishing and super polishing of direct restorations.



**One Gloss Set [PN 0180]**  
One step finishing and polishing system of silicone points for direct restorations.

